



The SC-LX901 featuring 11.2-ch Direct Energy HD amplifier is fully-equipped for the latest multi-dimensional surround sound formats, DTS:X® and Dolby Atmos®, featuring the Reflex Optimizer for Dolby Atmos-enabled speakers. With Ultra HD (4K/60p/4:4:4) upscaling/pass-through and HDR10/Dolby Vision™*/BT.2020 standards pass-through ready, images are ever more impressive. In addition to internet radio and various network streaming services, with FlareConnect™, Chromecast built-in and DTS Play-Fi® you can use your mobile device to stream your favourite music to your receiver. The multi-zone feature supports powered ZONE 2/ZONE 3 output.

*Available with future firmware update.

AMPLIFICATION

- > Channels: 11
- > Amplification Type: Class D (Direct Energy HD)
- > 850 W Multi-ch Simultaneous Drive (8 ohms, 1 kHz, THD 1.0 %)
- > 200 W/ch (6 ohms, 1 kHz, 1ch Driven IEC)

CONSTRUCTION DESIGN

- > Advanced Direct Construction
- > Rigid Trans-Stabilizer
- > Anti-Standing Wave Insulator

AUDIO FEATURES

- > AIR Studios Sound Tuning
- > Dolby Atmos®/Dolby Surround
- > DTS:X/DTS Neural:X
- > Reflex Optimizer
- > Dolby® TrueHD/Dolby Digital Plus
- > DTS-HD Master Audio/DTS-HD High Resolution Audio/DTS 96/24/DTS-ES/DTS-HD Express
- > DSD Direct Playback via Network/USB (11.2, 5.6, 2.8 MHz/2ch)
- > DSD Disc (SACD) Playback via HDMI (2.8 MHz/5.1ch, 2ch)
- > Digital Core DSP Engine Analog Devices Sharc x2+TI Aureus x1
- > ESS SABRE³² Ultra DAC (ES9016S)
- > HDMI Audio Return Channel (ARC)
- > MCACC Pro Auto Room Tuning
 - Full Band Phase Control
 - Precision Distance
 - Subwoofer EQ (4 Band)
- > Advanced Sound Retriever (2ch)
- > Advanced Surround Modes
 - Classical, Unplugged, Entertainment Show, Drama, Advanced Game, Action, Rock/Pop, Sports, Extended Stereo, Extended Mono, Front Stage Surround Advance, Auto Surround

VIDEO FEATURES

- > Ultra HD Pass-through with HDCP 2.2 (4K/60p/4:4:4/24-bit, 4K/24p/4:4:4/36-bit, 4K/60p/4:2:0/36-bit)
- > HDR (HDR10/Dolby Vision*1) and BT.2020 Pass-through Support
- > Ultra HD Upscaling (1080p → 4K)
- > 3D Ready (Blu-ray Disc™, Broadcast, and Games)
- > Deep Colour (36-bit), "x.v.Colour"

HOME NETWORK FEATURES

- > FlareConnect™*1 for Multi-room Audio
- > Chromecast built-in*1*2
- > DTS Play-Fi*1
- > Apple AirPlay Certified
- > Spotify, Tidal*1, and Deezer*1 Music Streaming Services Ready*3
- > Internet Radio (TuneIn)
- > Hi-Res Audio File Playback via USB/Network
 - Up to 192 kHz/24-bit ALAC, AIFF, FLAC, WAV
 - 11.2/5.6/2.8 MHz DSD Playback
 - Dolby® TrueHD Playback (USB only)

CONVENIENCE FEATURES

- > Built-in Wi-Fi® (Dual Band 5 GHz/2.4 GHz)
- > Built-in Bluetooth® Wireless Technology (Version: 4.1, Profile: A2DP/AVRCP, Codec: SBC/AAC)
- > Pioneer Remote App Ready (iOS/Android™)*4
- > iControlAV5 Remote Control App Ready (iOS/Android)*4
- > New GUI with System/Network Setup Menu
- > Auto Power Off in HDMI Standby Through
- > AM/FM Tuner 40 Presets
- > Sleep Timer
- > User-Friendly Simple Remote Control

FRONT TERMINALS

- > HDMI 1 In
- > USB 1 In for USB Drive
- > MCACC Setup MIC In
- > Phones 1 Out

REAR TERMINALS

- > HDMI 7 In (4 Assignable)
- > HDMI 2 Out (1 for MAIN, 1 for SUB)
- > Ethernet 1 In
- > AV (Component) 2 In (Assignable)

- > AV (Composite) 2 In (Assignable)
- > Audio 2 In (Assignable)
- > Phono (MM) 1 In
- > Digital Coaxial 2 In (Assignable)
- > Digital Optical 3 In (Assignable)
- > Subwoofer 2 Pre Out
- > Zone 2/ZONE 3 Pre/Line Out
- > Speaker 11 ch Out (FRONT, CENTER, HEIGHT 2/ZONE 2/SP-B, SURROUND BACK, SURROUND, HEIGHT 1/Bi-AMP/ZONE 3)
- > IR 1 In/1 Out

- > 12 V Trigger 2 Out/RS-232C
- > FM/AM Antenna

SPECIFICATIONS

- > Power Requirements: AC 220-230/240 V, 50/60 Hz
- > Power Consumption/Standby: 340 W/0.15 W
- > Dimensions (W x H x D): 435 x 185 x 441 mm
- > Weight: 18.3 kg



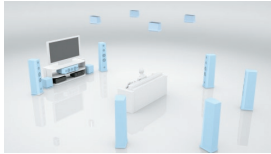
SC-LX901(B)/MHB

Multi-Dimensional Excitement with Dolby Atmos®

The SC-LX901 is compatible with 7.2.4ch/7.2.2ch/5.2.4ch configuration of the latest cinema sound platform, Dolby Atmos®. You can reproduce object-oriented sound in smooth, curving movements, or the realistic three-dimensional movement overhead by the top speakers.



Dolby Atmos 7.2.4ch Speaker System



DTS:X®

DTS:X is the next-generation audio codec from DTS that leverages object-based audio to enable new immersive and interactive audio experiences. Since DTS:X can automatically adapt the audio to the existing channels and speaker system, no specific speaker layout is required. Experience an immersive soundscape with incredibly rich and life-like audio.



Chromecast built-in

The SC-LX901 comes with Chromecast built-in, so you can use your mobile device to stream your favourite music, radio, or podcasts to your speaker. You can control the audio from anywhere in the house using Chromecast-enabled apps running on your personal device—iPhone, iPad, Android phone and tablet, Mac and Windows laptop, and Chromebook™. Discover Chromecast-enabled apps at g.co/cast/audioapps.



* Chromecast built-in will be available with firmware update.

DTS Play-Fi®

DTS Play-Fi® wirelessly streams any audio content from any compatible mobile device to the SC-LX901 and DTS Play-Fi compatible audio systems, creating a multi-room system in your home. You can stream different sources to different speakers at the same time from the Pioneer Music Control App.



* Available with firmware update

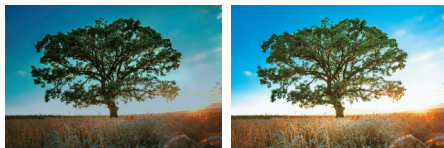
Next-Generation Video Standard Ready

The SC-LX901 supports pass-through for Dolby Vision® and HDR10 signals. By connecting a compatible source device, you can enjoy these latest video standards on a compatible display. What's more, all HDMI terminals support 4K (60p/4:4:4/24-bit), Wide Colour Gamut (BT.2020), and HDCP 2.2, so you will have no problem when upgrading to new devices, and can also enjoy premium content such as 4K videos with digital copy protection.



* 6G Video, HDR, HDCP 2.2 supported on HDMI IN 1/2/3/4/5 and HDMI OUT 1/2. Dolby Vision will be available with future firmware update.

HDR Dynamic Range Expansion Image



No HDR With HDR For illustration purpose only

MCACC Pro Auto Room Tuning

MCACC Pro, the pinnacle of Pioneer's auto room tuning technology, analyses the phase and group delay characteristics to precisely control phase differences between speakers. MCACC Pro corrects phase differences in all ranges and all channels, from phase difference in the original audio material to the sound emitted from the speakers.



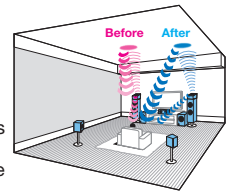
Full Band Phase Control

Pioneer's Phase Control technology effectively eliminates phase lag and significantly improves the multi-channel sound without any extra operation. Furthermore, The Full Band Phase Control technology focuses on the group delay in the speaker network filter, and adjusts the phase of each unit as well as the group delay for each speaker. Multi-range speakers gain the sound coherence of full-range speakers, while retaining the wide frequency range advantage. In an environment where the phase of all units and all channels are precisely controlled, a remarkably clear sound location with a surrounding feel is achieved. In combination with MCACC Pro, the ideal multi-channel reproduction environment can be created, which faithfully replicates object audio and the intention of the directors.



Reflex Optimizer

High directivity sound reflects off the ceiling, while low directivity sound directly reaches the ears. This difference causes a phase shift, making the sound feel uncomfortable. To solve this, the new technology optimizes the performance of your up-firing elevation speakers for your listening environment, by aligning the phase of direct and indirect sound, matching the basic tone, and optimizing the upward-oriented frequencies. The result is overall seamless sound with Dolby enabled speakers, allowing the ideal reproduction of three-dimensional surround sound.



Multi-room Audio Offers a Variety of Ways to Enjoy Music

FlareConnect™ shares audio from network and external audio input sources between compatible components. Enjoy effortless multi-room playback of LP records, CDs, network music services, and more with supported components and speaker systems. Music selection, speaker grouping, and playback management across the home are built into the Pioneer Remote App**.

* Sharing audio from external inputs is enabled with a future firmware update. External audio inputs supporting FlareConnect may differ depending on model. Please consult individual product specification for more information.

** Download free from the App Store or Google Play.



•PIONEER, MCACC, Phase Control, Advanced Sound Retriever, and the logos are registered trademarks of Pioneer Corporation, and are used under license. •The terms HDMI and HDMI High-Definition Multimedia Interface, and the HDMI Logo are trademarks or registered trademarks of HDMI Licensing LLC in the United States and other countries. •Dolby, Dolby Atmos, Dolby Surround, Dolby Vision, and the double-D symbol are registered trademarks of Dolby Laboratories. •For DTS patents, see <http://patents.dts.com>. Manufactured under license from DTS, Inc. DTS, the Symbol, DTS and the Symbol together, DTS:X, the DTS:X logo, Play-Fi, and the Play-Fi logo are registered trademarks or trademarks of DTS, Inc. in the United States and/or other countries. •DTS, Inc. All Rights Reserved. •AirPlay, iPod, iPhone, iPad, and Mac are trademarks of Apple Inc., registered in the U.S. and other countries. •AirPlay works with iPhone, iPad, and iPod touch with iOS 4.3.3 or later, Mac with OS X Mountain Lion, and Mac and PC with iTunes 10.2.2 or later. The AirPlay logo is a trademark of Apple Inc. App Store is a service mark of Apple Inc. •iOS is a trademark on which Cisco holds the trademark right in the US and certain other countries. •Wi-Fi is a registered trademark of the Wi-Fi Alliance. The Wi-Fi CERTIFIED Logo is a certification mark of the Wi-Fi Alliance. •The Bluetooth® word mark and logos are registered trademarks owned by Bluetooth SIG, Inc. •"x.v.Colour" is a trademark of Sony Corporation. •Spotify and the Spotify logo are trademarks of the Spotify Group, registered in the U.S. and other countries. •The product with the Hi-Res Audio logo is conformed to Hi-Res Audio standard defined by Japan Audio Society. The logo is used under license from Japan Audio Society. •Google, Google Play, Android, Chromecast built-in, and Chromebook are trademarks of Google Inc. •Blu-ray Disc™, Blu-ray™, Ultra HD Blu-ray™ and the logos are trademarks of the Blu-ray Disc Association. •SABRE™ is a trademark of ESS Technology, Inc. •AIR STUDIOS and the AIR STUDIOS logo are registered trademarks of Air Studios, Inc.